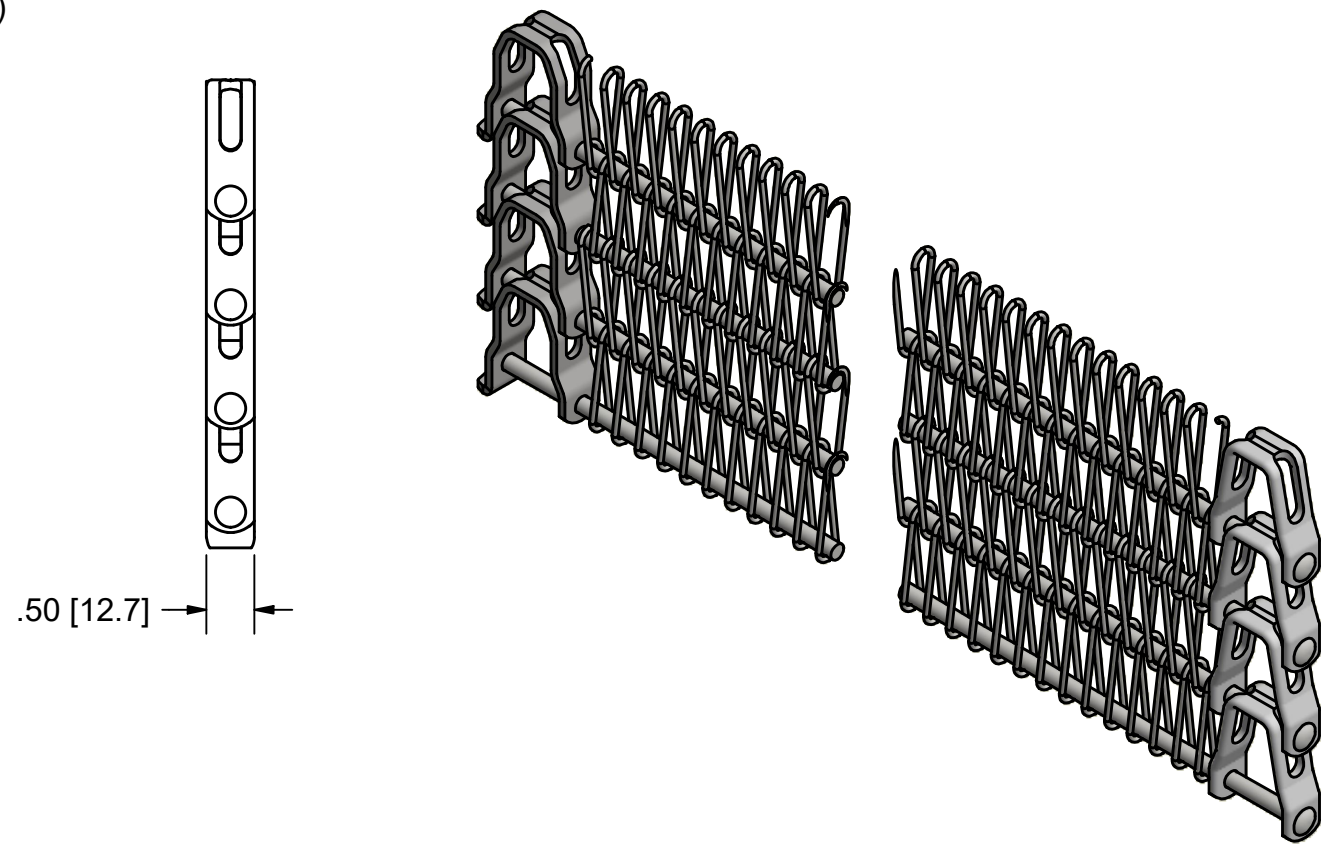
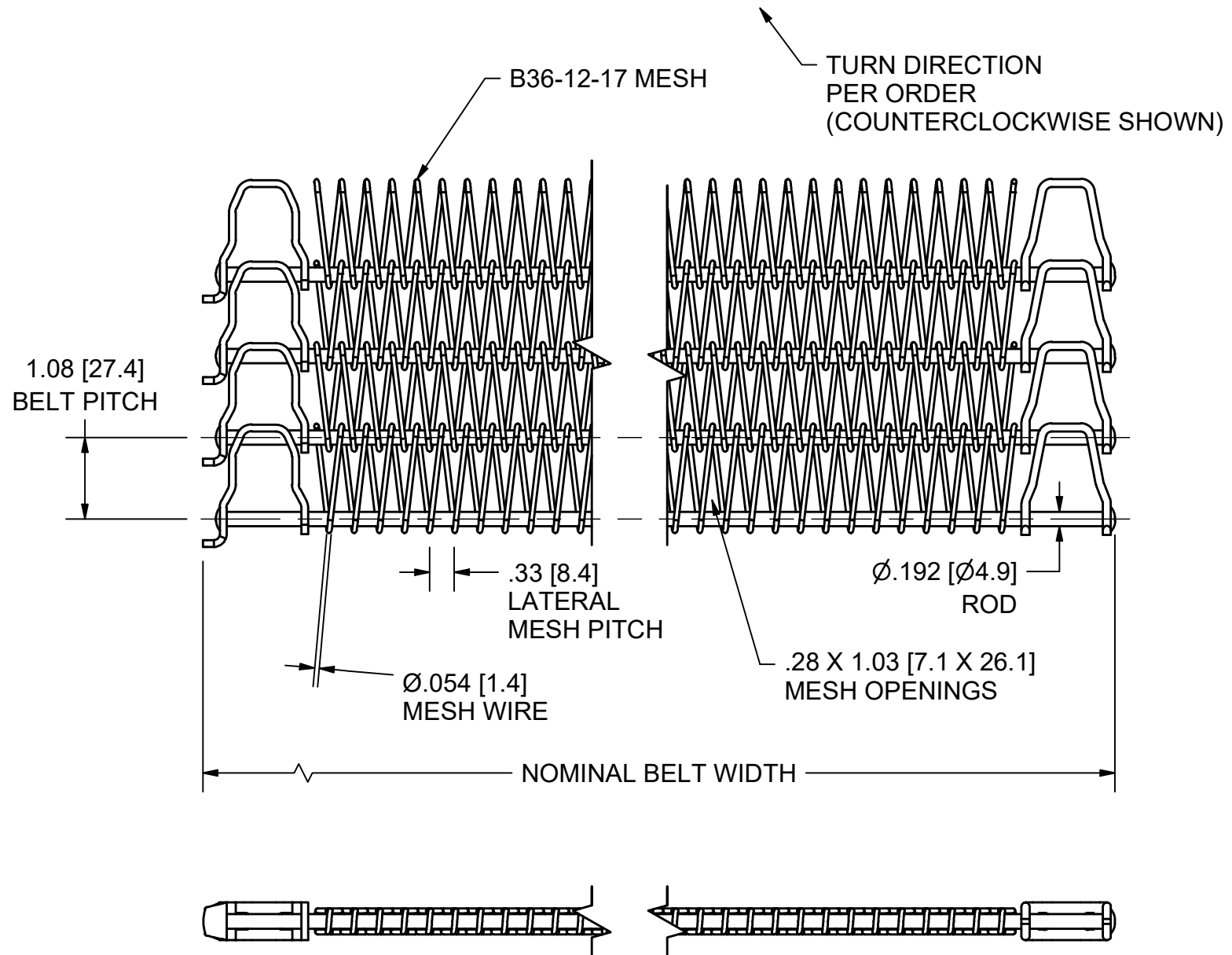


REVISION HISTORY			
REV	DESCRIPTION	DATE	APPROVED
A		7/6/21	



***PIGTAILS NOT SHOWN

THIS DRAWING CONTAINS CONFIDENTIAL INFORMATION AND TRADE SECRETS OF ASHWORTH BROS., INC. IT MAY NOT BE REPRODUCED IN WHOLE OR IN PART OR USED FOR THE BENEFIT OF ANYONE OTHER THAN ASHWORTH BROS., INC. NO RIGHT IS GRANTED TO DISCLOSE OR USE ANY INFORMATION SHOWN ON THIS DRAWING.

- NOTES:
1. PDG100, B36-12-17 MESH
 2. MATERIAL: PER ORDER
 3. BELT WIDTH: PER ORDER

UNLESS OTHERWISE SPECIFIED DIMENSIONS ARE IN INCHES [mm]. DIMENSIONS NOTED ARE NOMINAL VALUES ONLY. ACTUAL DIMENSIONS ARE AFFECTED BY MANUFACTURING SPECS. AND / OR PROCESS CONDITIONS. CONTACT ASHWORTH ENGINEERING FOR MORE DETAIL.	CONTRACT / PROJECT NO.		Ashworth Bros., Inc. <small>450 ARMOUR DALE, WINCHESTER, VA 22601</small>		
	APPROVALS	DATE			
	DRAWN NEC	7/6/2021	TITLE ILLUSTRATION, PDG100, B36-12-17 MESH		
	DESIGN NEC	7/6/2021			
THIRD ANGLE PROJECTION	CHECKED	SIZE	CAGE CODE	QUOTE NO.	REV.
MATERIAL	REF ASSEMBLY	B	96664	PDG100-B36-12-17	A
TREATMENT	REF PART	SCALE	CALC.WT	SHEET	
FINISH	ASHWORTH PART NUMBER	1 / 2	N/A	1 OF 1	