

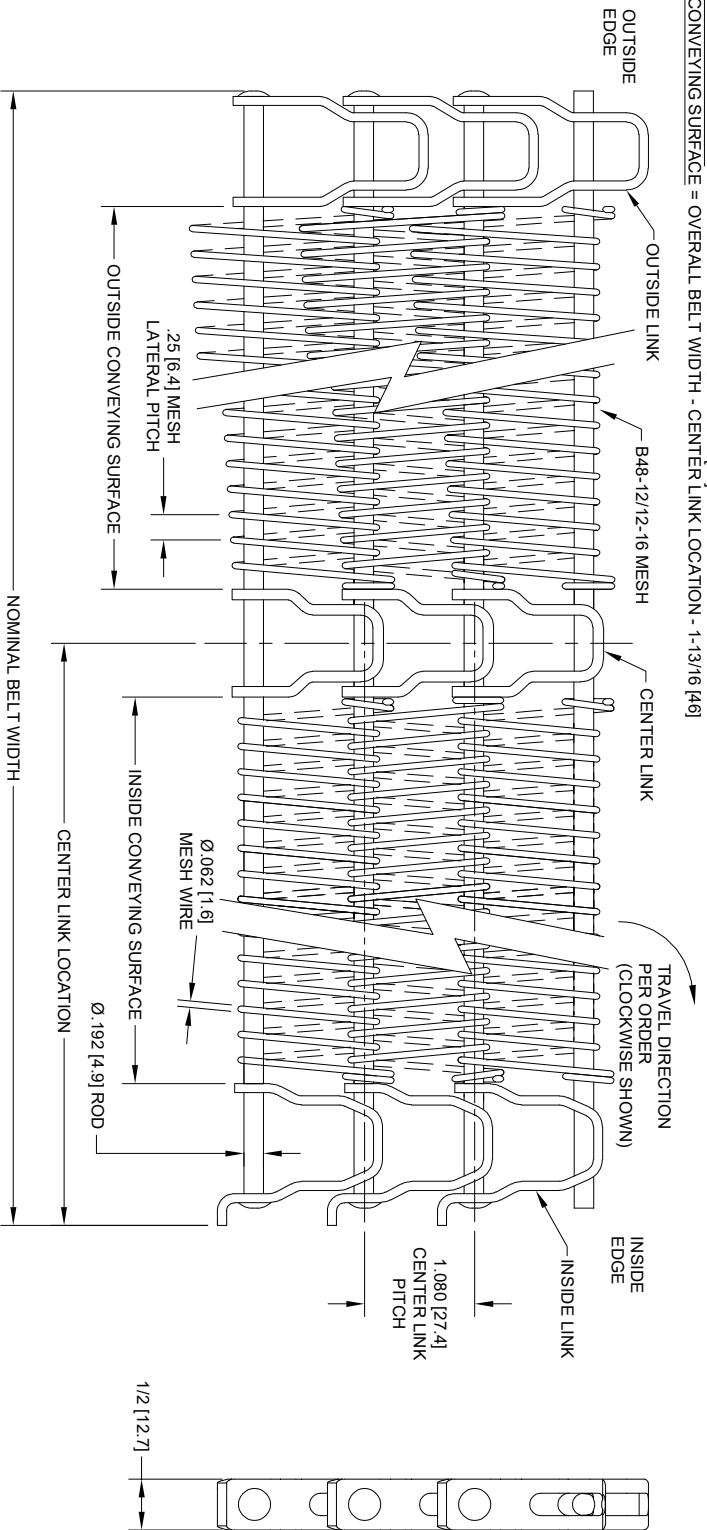
DWG NO.
SRPDG100-B48-12-12-16

SH REV
1 A

REVISION HISTORY

REV	DESCRIPTION	DATE
A	INITIAL RELEASE	

- NOTES:
- BELT WIDTH PER ORDER
 - CENTER LINK LOCATION AT CENTERLINE OF BELT
 - MATERIAL: PER ORDER
 - TURN DIRECTION PER ORDER (CLOCKWISE SHOWN)
 - CONVEYING SURFACE:
INSIDE CONVEYING SURFACE = CENTER LINK LOCATION - 2-1/64 [51]
OUTSIDE CONVEYING SURFACE = OVERALL BELT WIDTH - CENTER LINK LOCATION - 1-13/16 [46]



THIS DRAWING CONTAINS CONFIDENTIAL INFORMATION AND TRADE SECRETS OF ASHWORTH BROS., INC. IT MAY NOT BE REPRODUCED IN WHOLE OR IN PART OR USED FOR THE BENEFIT OF ANYONE OTHER THAN ASHWORTH BROS., INC. NO RIGHT IS GRANTED TO DISCLOSE OR USE ANY INFORMATION SHOWN ON THIS DRAWING.

UNLESS OTHERWISE SPECIFIED, DIMENSIONS ARE IN INCHES (mm) VALUES ONLY. ACTUAL DIMENSIONS ARE AFFECTED BY MANUFACTURING SPECS. AND/OR PROCESS CONDITIONS. CONTACT ASHWORTH ENGINEERING FOR MORE DETAIL.

CONTRACT / PROJECT NO.	APPROVALS	DATE
	NEC	1/11/22
DRAWN	DESIGN	CHECKED
REF ASSEMBLY	REF PART	REF ASSEMBLY
REF PART	REF PART	REF PART
ASHWORTH PART NUMBER	ASHWORTH PART NUMBER	ASHWORTH PART NUMBER

Ashworth
450 ARMOUR DALE, WINCHESTER, VA 22601

Ashworth Bros., Inc.

ILLUSTRATION, SRPDG100,
SMALL RADIUS POSI-DRIVE GRID 100,
B48-12/12-16 MESH

SIZE	CAGE CODE	DWG. NO.	REV.
B	96664	SRPDG100-B48-12-12-16	A
SCALE	CALC. BY	SHEET	1 OF 1