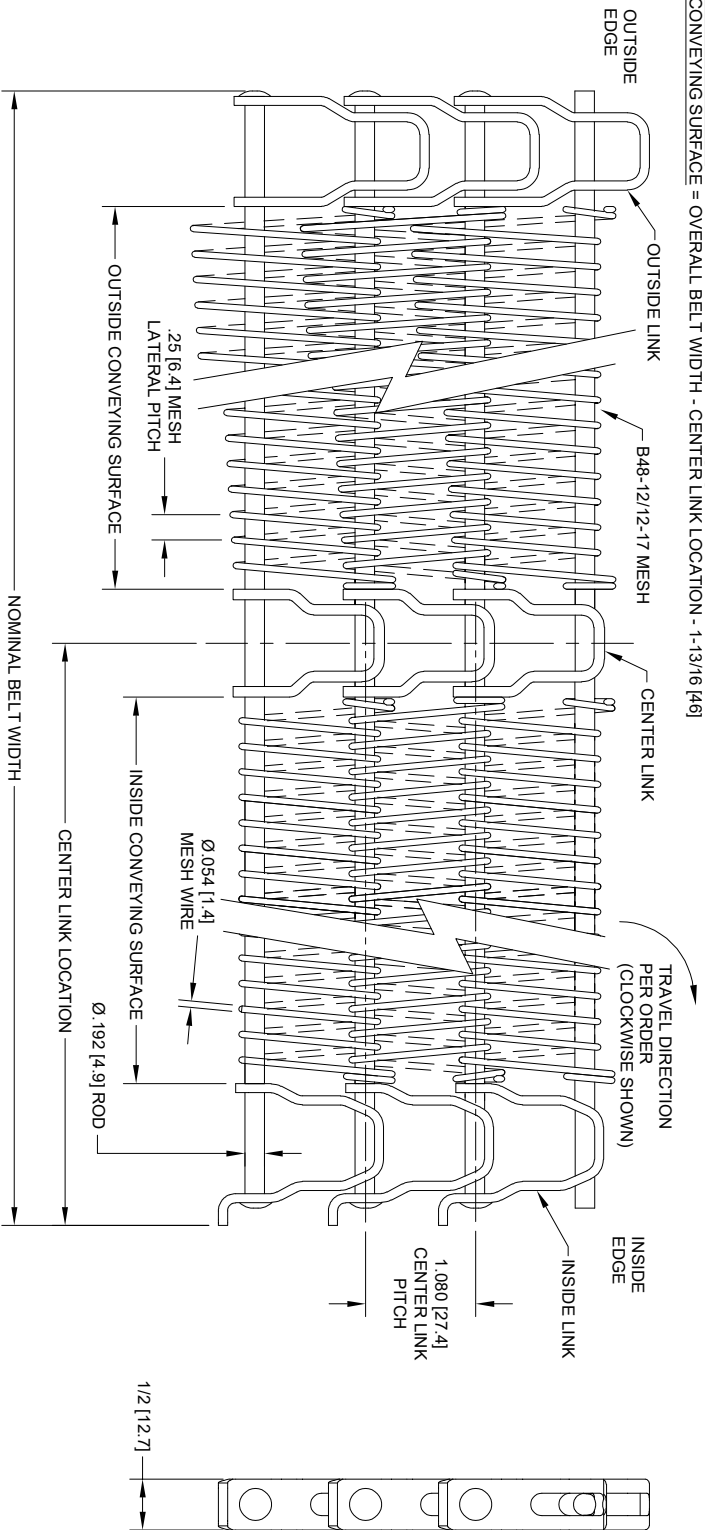


DWG NO. **SRPDG100-B48-12-12-17**

SH	REV	REVISION HISTORY	DATE
1	A	INITIAL RELEASE	

- NOTES:
- BELT WIDTH PER ORDER
 - CENTER LINK LOCATION AT CENTERLINE OF BELT
 - MATERIAL: PER ORDER
 - TURN DIRECTION PER ORDER (CLOCKWISE SHOWN)
 - CONVEYING SURFACE:
 - INSIDE CONVEYING SURFACE = CENTER LINK LOCATION - 2-1/64 [51]
 - OUTSIDE CONVEYING SURFACE = OVERALL BELT WIDTH - CENTER LINK LOCATION - 1-13/16 [46]



THIS DRAWING CONTAINS CONFIDENTIAL INFORMATION AND TRADE SECRETS OF ASHWORTH BROS., INC. IT MAY NOT BE REPRODUCED IN WHOLE OR IN PART OR USED FOR THE BENEFIT OF ANYONE OTHER THAN ASHWORTH BROS., INC. NO RIGHT IS GRANTED TO DISCLOSE OR USE ANY INFORMATION SHOWN ON THIS DRAWING.

UNLESS OTHERWISE SPECIFIED, DIMENSIONS ARE IN INCHES (mm) VALUES ONLY. ACTUAL DIMENSIONS ARE AFFECTED BY MANUFACTURING SPECS. AND/OR PROCESS CONDITIONS. CONTACT ASHWORTH ENGINEERING FOR MORE DETAIL.	CONTRACT / PROJECT NO.
THIRD ANGLE PROJECTION	APPROVALS
MATERIAL	DATE
TREATMENT	DESIGN
FINISH	CHECKED
	REF ASSEMBLY
	REF PART
	ASHWORTH PART NUMBER

		Ashworth Bros., Inc. 450 ARMOUR DALE, WINCHESTER, VA 22601	
TITLE		ILLUSTRATION, SRPDG100, SMALL RADIUS POSI-DRIVE GRID 100, B48-12/12-17 MESH	
SIZE	CAGE CODE	DWG. NO.	REV.
B	96664	SRPDG100-B48-12-12-17	A
SCALE	CALC. BY	SHEET	1 OF 1

S:\Product Eng\Modwgs\belts\SIGN OFF.jdw