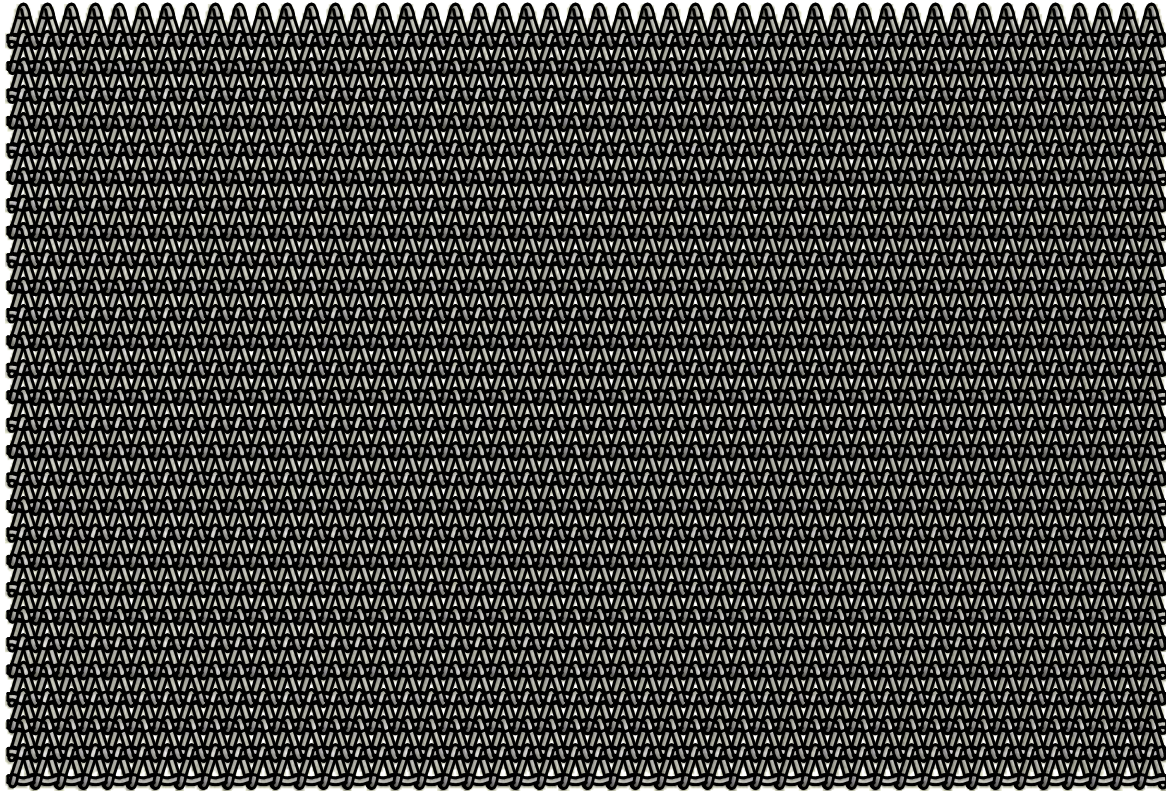



**BELT SPECIFICATIONS**

Crimp Wire Size: 0.035 Inches [0.88 mm]  
 Spiral Wire Size: 0.035 Inches [0.88 mm]  
 Lateral Pitch: 0.12 Inches [3.2 mm]  
 Longitudinal Pitch: 0.14 Inches [3.6 mm]



**DRAWN FULL SCALE**

DO NOT SCALE DRAWING		 <b>Ashworth</b> 450 ARMOUR DALE, WINCHESTER, VA 22601	<b>Ashworth Bros., Inc.</b>	
APPROVALS	DATE		450 ARMOUR DALE, WINCHESTER, VA 22601	
DRAWN witrinc	7/25/2013	TITLE <b>Woven Belt B96-84-20</b>		
UNLESS OTHERWISE SPECIFIED DIMENSIONS ARE IN <u>INCHES</u> . TOLERANCES: .X = ± .03      FRACTION ± 1/16 .XX = ± .015      ANGLES ± 1/2° .XXX = ± .005 .XXXX = ± .0005      SURF FINISH 63 ✓		SIZE <b>A</b>	DWG. NO. <b>19-4029</b>	REV. <b>B</b>
CAD/FILE NAME Balanced Weave Assy.idw		SCALE <b>1 : 1</b>	CALC.WT N/A	SHEET 1 OF 1