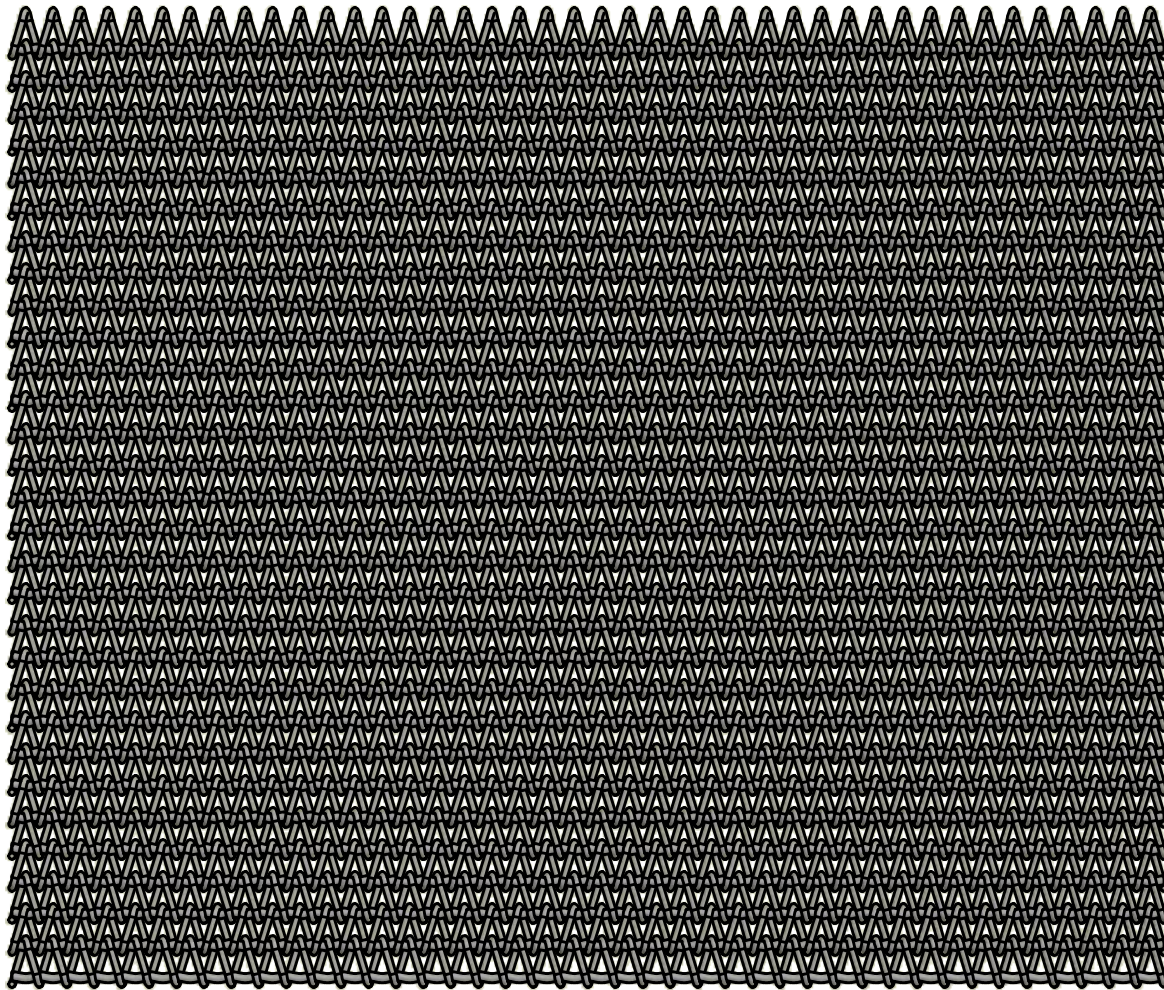



**BELT SPECIFICATIONS**

Crimp Wire Size: 0.048 Inches [1.21 mm]  
 Spiral Wire Size: 0.035 Inches [0.88 mm]  
 Lateral Pitch: 0.14 Inches [3.6 mm]  
 Longitudinal Pitch: 0.17 Inches [4.2 mm]



DO NOT SCALE DRAWING		 <b>Ashworth</b> 450 ARMOUR DALE, WINCHESTER, VA 22601	<h1>Ashworth Bros., Inc.</h1>	
APPROVALS	DATE		TITLE	
DRAWN <i>witrinc</i>	9/11/2019	<h2>Woven Belt B84-72-1820</h2>		
UNLESS OTHERWISE SPECIFIED DIMENSIONS ARE IN INCHES. TOLERANCES: .X = ± .03      FRACTION ± 1/16 .XX = ± .015      ANGLES ± 1/2° .XXX = ± .005 .XXXX = ± .0005      SURF FINISH 63 ✓		SIZE	DWG. NO.	REV.
CAD/FILE NAME		SCALE	CALC. WT	SHEET
BW Assy.idw				