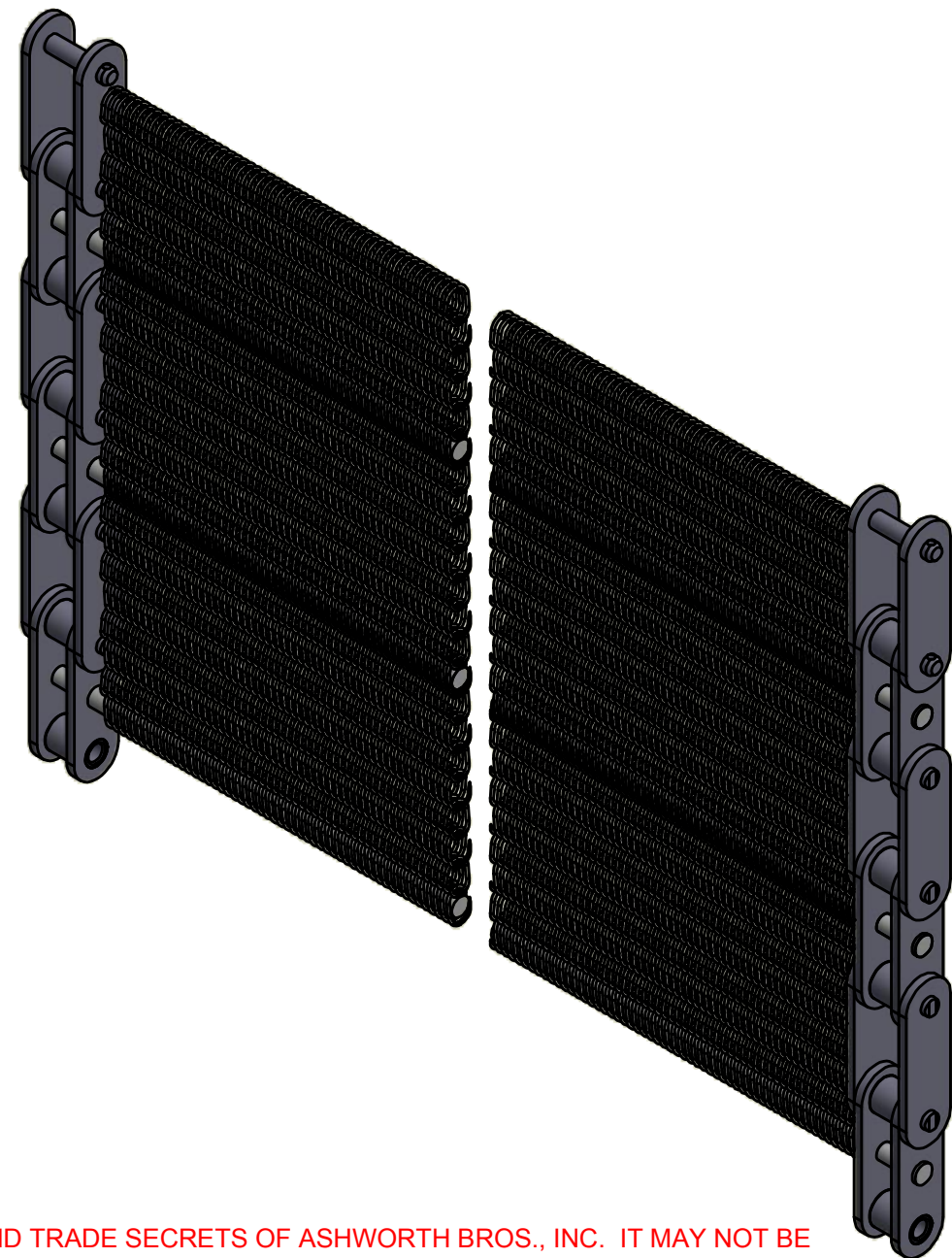
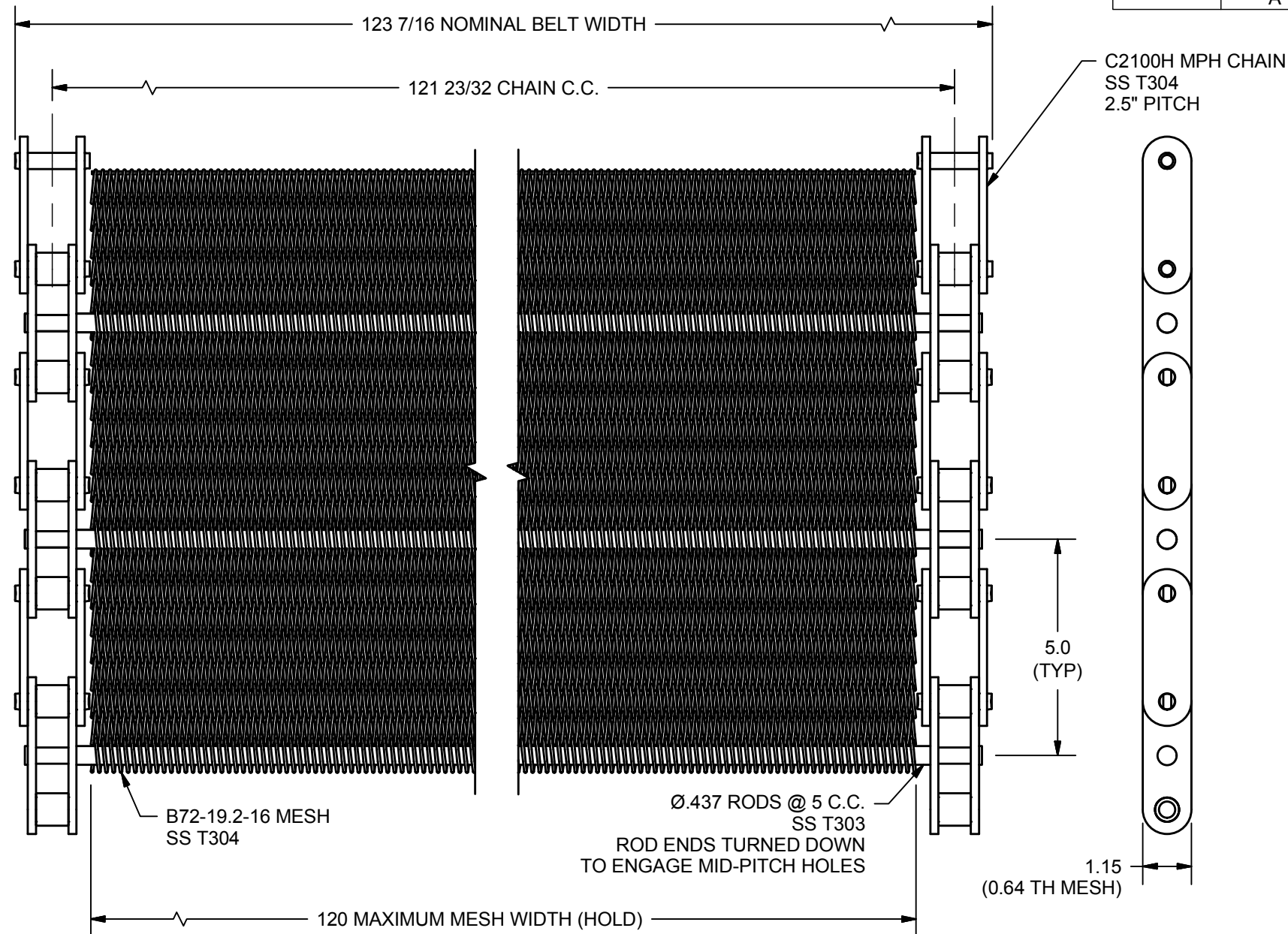


REVISION HISTORY				
ZONE	REV	DESCRIPTION	DATE	APPROVED
	A	INITIAL RELEASE REF Q44459, L3		



THIS DRAWING CONTAINS CONFIDENTIAL INFORMATION AND TRADE SECRETS OF ASHWORTH BROS., INC. IT MAY NOT BE REPRODUCED IN WHOLE OR IN PART OR USED FOR THE BENEFIT OF ANYONE OTHER THAN ASHWORTH BROS., INC. NO RIGHT IS GRANTED TO DISCLOSE OR USE ANY INFORMATION SHOWN ON THIS DRAWING.

NOTES:

1. MATERIAL: PER ORDER.
2. BELT WT = 44.45 LB/LIN FT.
3. MESH OPENING SIZE = 0.1 X 0.48".
4. MESH OPEN AREA PERCENTAGE:
52% SURFACE
48.7% THROUGH

UNLESS OTHERWISE SPECIFIED
DIMENSIONS ARE IN INCHES.
TOLERANCES:
.X = ± .03 FRACTION ± 1/16
.XX = ± .015 ANGLES ± 1/2°
.XXX = ± .005
.XXXX = ± .0005 SURF FINISH ✓ 63

DO NOT SCALE DRAWING

THIRD ANGLE PROJECTION

MATERIAL

TREATMENT

FINISH NONE

CONTRACT / PROJECT NO.

APPROVALS DATE

DRAWN NEC 12/14/2017

DESIGN NEC 12/14/2017

CHECKED JRL 12/15/2017

REF ASSEMBLY

REF PART

ASHWORTH PART NUMBER

Ashworth Bros., Inc.
450 ARMOUR DALE, WINCHESTER, VA 22601

TITLE
ILLUSTRATION, PDCE BELT, B72-19.2-16, C2100H
CHAIN, .437 DIA. MID PITCH RODS AT 5" C.C.,
123-7/16 O.A. WIDTH

SIZE	CAGE CODE	DWG. NO.	REV.
B	96664	PDCE-C2100H-B72-19.2-16	A
SCALE	CALC.WT	SHEET	
.3	N/A	1 OF 1	