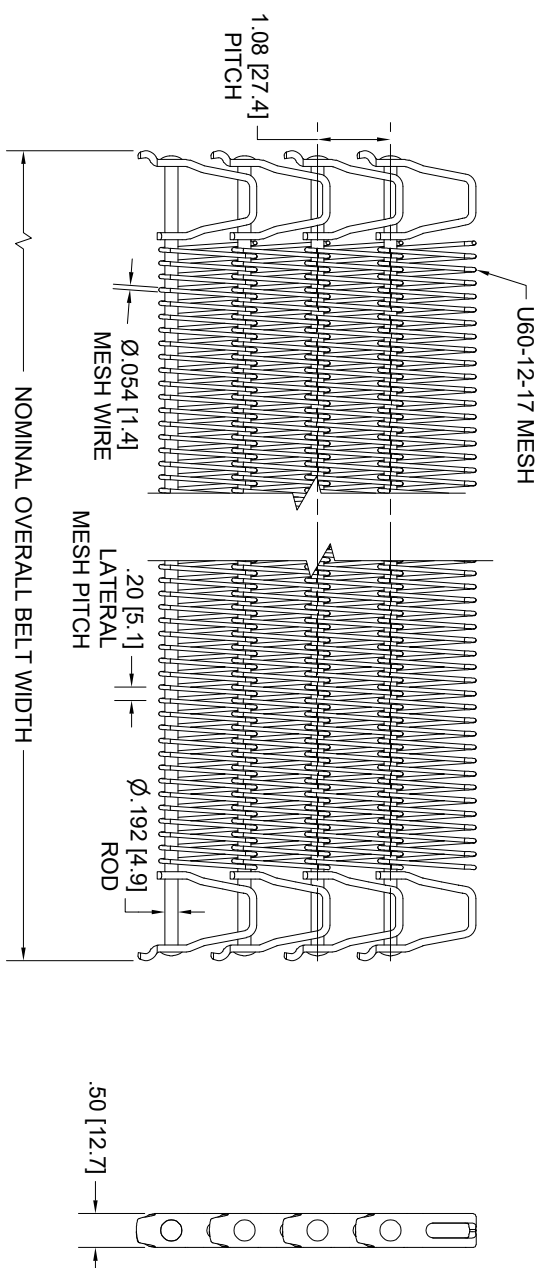


DWG NO.
OP100-U60-12-17

SH REV
1 A

REVISION HISTORY			
REV	DESCRIPTION	DATE	APPROVED
A		1/19/23	



THIS DRAWING CONTAINS CONFIDENTIAL INFORMATION AND TRADE SECRETS OF ASHWORTH BROS., INC. IT MAY NOT BE REPRODUCED IN WHOLE OR IN PART OR USED FOR THE BENEFIT OF ANYONE OTHER THAN ASHWORTH BROS., INC. NO RIGHT IS GRANTED TO DISCLOSE OR USE ANY INFORMATION SHOWN ON THIS DRAWING.

***PIGTAILS NOT SHOWN

UNLESS OTHERWISE SPECIFIED DIMENSIONS ARE IN INCHES (mm) VALUES NOTED ARE NOMINAL VALUES ONLY. ACTUAL DIMENSIONS ARE AFFECTED BY MANUFACTURING SPECS. AND/OR PROCESS CONDITIONS. CONTACT ASHWORTH ENGINEERING FOR MORE DETAIL.		CONTRACT / PROJECT NO.	
THIRD ANGLE PROJECTION		DRAWN	DATE
MATERIAL	REF ASSEMBLY	DESIGN	1/19/23
TREATMENT	REF PART	CHECKED	
FINISH	REF PART	REF ASSEMBLY	
NONE	ASHWORTH PART NUMBER		
TITLE		Ashworth	
ILLUSTRATION, OP100, U60-12-17 MESH		450 ARMOUR DALE, WINCHESTER, VA 22801	
SIZE	CAGE CODE	ILLUSTRATION NO.	REV.
B	96664	OP100-U60-12-17	A
SCALE	CALC/W/T	SHEET	
1 / 2	N/A	1 OF 1	

- NOTES:
1. MATERIAL: PER ORDER
 2. BELT WIDTH: PER ORDER